

AOYUE[®]

469

Soldering Station

Instruction Manual

Thank you for purchasing the Aoyue 469 Soldering Station. Please read the manual before using the unit.

Keep manual in accessible place for future reference.

AOYUE INTERNATIONAL LIMITED

Jishui Industrial Zone, Nantou, Zhongshan City,
Guangdong Province, P.R.China
<http://www.aoyue.com>

AOYUE[®]

469

Soldering Station

Instruction Manual

Thank you for purchasing the Aoyue 469 Soldering Station. Please read the manual before using the unit.

Keep manual in accessible place for future reference.

AOYUE INTERNATIONAL LIMITED

Jishui Industrial Zone, Nantou, Zhongshan City,
Guangdong Province, P.R.China
<http://www.aoyue.com>

CARE AND MAINTENANCE

This manual is designed to familiarize and instruct the technician with the proper operation and maintenance of the equipment. The "Care and Safety Precautions" section explains the hazards of using any type of soldering or reworking device. Please read carefully and observe the guidelines in order to maximize usage and minimize the risk of injury or accidents .

TABLE OF CONTENTS

Product Description	3
Package Inclusion	3
Package Content	4-5
Product Assembly	6-7
Safety Precautions	8
Functions and Features.....	9
Operating Guidelines.....	10
Care and Maintenance	11

1. **Tip Temperature :** High temperature shortens tip life and may cause thermal shock to components. Always use the lowest possible temperature when soldering.
2. **Cleaning :** Always clean the soldering tip before use to remove any residual solder or flux adhering to it.
3. **After usage:** Always clean the tip and coat it with fresh solder after use. This guards against oxidation and prolongs tip life.
4. **System Care:** Never allow the unit to stay idle at high temperature for extended periods. Utilize the automated sleep feature to conserve energy, pro-long tip and heating element life. If unit will not be used for long periods it is advised to power down the unit and unplug from the mains.
5. **Inspecting and cleaning the tip:**
 - ◆ Set the temperature to level 1.
 - ◆ When the temperature stabilizes, clean the tip and check its condition. If the tip is badly worn or deformed, replace it.
 - ◆ If the solder plated part of the tip is covered with black oxide, apply fresh solder containing flux and clean the tip again. Repeat until all the oxide is removed then coat the tip with fresh solder.
 - ◆ Never file the tip to remove oxide.
 - ◆ Remaining oxides such as the yellow discoloration on the tip shaft can be removed with isopropyl alcohol.

CARE AND MAINTENANCE

This manual is designed to familiarize and instruct the technician with the proper operation and maintenance of the equipment. The "Care and Safety Precautions" section explains the hazards of using any type of soldering or reworking device. Please read carefully and observe the guidelines in order to maximize usage and minimize the risk of injury or accidents .

TABLE OF CONTENTS

Product Description	3
Package Inclusion	3
Package Content	4-5
Product Assembly	6-7
Safety Precautions	8
Functions and Features.....	9
Operating Guidelines.....	10
Care and Maintenance	11

1. **Tip Temperature :** High temperature shortens tip life and may cause thermal shock to components. Always use the lowest possible temperature when soldering.
2. **Cleaning :** Always clean the soldering tip before use to remove any residual solder or flux adhering to it.
3. **After usage:** Always clean the tip and coat it with fresh solder after use. This guards against oxidation and prolongs tip life.
4. **System Care:** Never allow the unit to stay idle at high temperature for extended periods. Utilize the automated sleep feature to conserve energy, pro-long tip and heating element life. If unit will not be used for long periods it is advised to power down the unit and unplug from the mains.
5. **Inspecting and cleaning the tip:**
 - ◆ Set the temperature to level 1.
 - ◆ When the temperature stabilizes, clean the tip and check its condition. If the tip is badly worn or deformed, replace it.
 - ◆ If the solder plated part of the tip is covered with black oxide, apply fresh solder containing flux and clean the tip again. Repeat until all the oxide is removed then coat the tip with fresh solder.
 - ◆ Never file the tip to remove oxide.
 - ◆ Remaining oxides such as the yellow discoloration on the tip shaft can be removed with isopropyl alcohol.

OPERATING GUIDELINES

REMINDERS:

- Make sure the equipment is placed on a flat stable surface and all the heat-generating components placed on their respective holders or stands.
- Ensure all function switches are OFF prior plugging to wall outlet.
- Ensure all terminal connections are properly secured.

A. INITIAL PROCEDURES

1. Follow Assembly Guide to put together station.
2. Plug the power cord into a grounded wall socket. The station is protected against electrostatic discharge and must be grounded for full efficiency.
3. Turn Power Switch ON.
4. The unit is now ready for use.

B. TEMPERATURE CONTROL

1. Turn the power ON. LED indicator will start blinking indicating system is now turned "On".
2. To Increase the temperature, turn the Temperature control knob clock wise. To decrease Set temperature, turn the Temperature control knob counter clockwise.

PRODUCT DESCRIPTION

The Aoyue 469 is a high performance soldering iron. It is equipped with a fast acting PTC ceramic heater suitable for advance soldering needs. The separate tip and heater design offers cost efficiency and easy replacement of tips.

The portable and lightweight design of the system save precious desktop space and allows easy packing for occasions when offsite soldering is required.

PACKAGE INCLUSION

- 469 Main Station
- Spring Type Iron Holder (with securing screw)
- 469 Platform
- Sponge Holder with Cleaning Sponge
- Solder Spool Stand
- User Manual
- Assembly Guide

OPERATING GUIDELINES

REMINDERS:

- Make sure the equipment is placed on a flat stable surface and all the heat-generating components placed on their respective holders or stands.
- Ensure all function switches are OFF prior plugging to wall outlet.
- Ensure all terminal connections are properly secured.

A. INITIAL PROCEDURES

1. Follow Assembly Guide to put together station.
2. Plug the power cord into a grounded wall socket. The station is protected against electrostatic discharge and must be grounded for full efficiency.
3. Turn Power Switch ON.
4. The unit is now ready for use.

B. TEMPERATURE CONTROL

1. Turn the power ON. LED indicator will start blinking indicating system is now turned "On".
2. To Increase the temperature, turn the Temperature control knob clock wise. To decrease Set temperature, turn the Temperature control knob counter clockwise.

PRODUCT DESCRIPTION

The Aoyue 469 is a high performance soldering iron. It is equipped with a fast acting PTC ceramic heater suitable for advance soldering needs. The separate tip and heater design offers cost efficiency and easy replacement of tips.

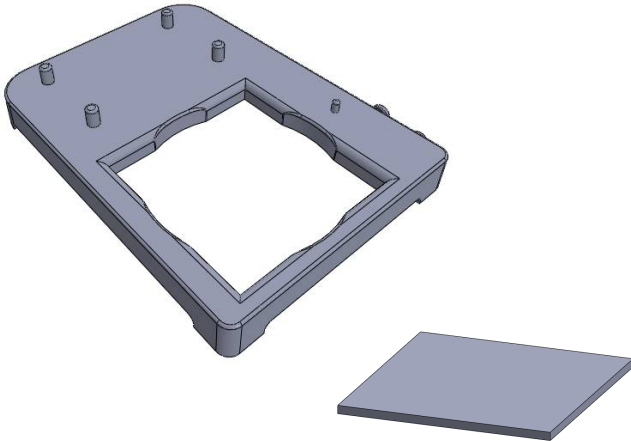
The portable and lightweight design of the system save precious desktop space and allows easy packing for occasions when offsite soldering is required.

PACKAGE INCLUSION

- 469 Main Station
- Spring Type Iron Holder (with securing screw)
- 469 Platform
- Sponge Holder with Cleaning Sponge
- Solder Spool Stand
- User Manual
- Assembly Guide

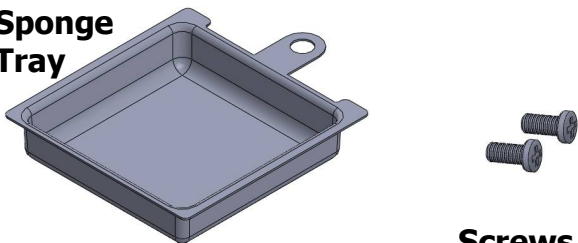
PACKAGE CONTENT

Platform



Sponge

Sponge Tray



Screws

4

SPECIFICATION

MAIN STATION

Voltage Input :	available in 110V / 220V
Station Dimensions:	51(w) x 59 (h) x 85 (d) mm
Weight:	235 grams
Power Consumption:	60W
Temperature Range:	300°C - 480°C
Heating Element	PTC Ceramic heater
PTC ceramic voltage:	available in 110V / 220V

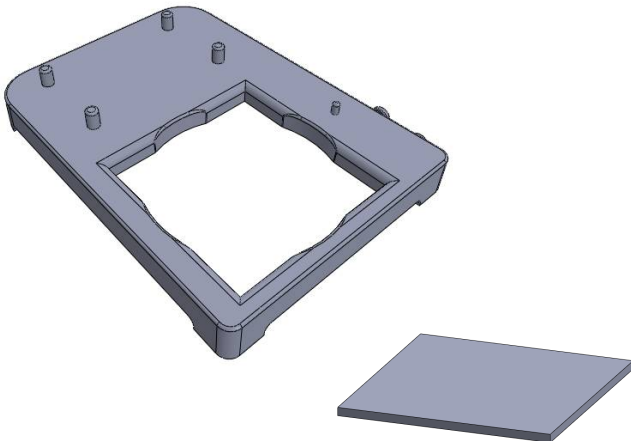
FUNCTIONS and FEATURES

- PTC ceramic heater and removable tip design.
- High power heating element for fast heat recovery.
- Temperature control knob for easy adjustment.
- Portable and lightweight system.

9

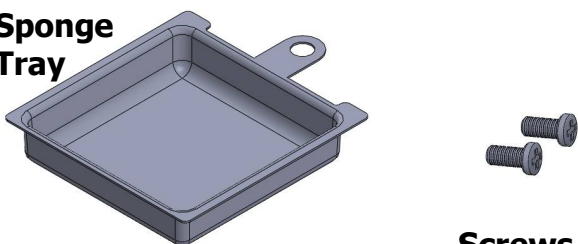
PACKAGE CONTENT

Platform



Sponge

Sponge Tray



Screws

4

SPECIFICATION

MAIN STATION

Voltage Input :	available in 110V / 220V
Station Dimensions:	51(w) x 59 (h) x 85 (d) mm
Weight:	235 grams
Power Consumption:	60W
Temperature Range:	300°C - 480°C
Heating Element	PTC Ceramic heater
PTC ceramic voltage:	available in 110V / 220V

FUNCTIONS and FEATURES

- PTC ceramic heater and removable tip design.
- High power heating element for fast heat recovery.
- Temperature control knob for easy adjustment.
- Portable and lightweight system.

9

SAFETY PRECAUTIONS



CAUTION: Improper usage can cause serious injury to personnel and/or damage to equipment and work area. For your own safety, please observe the following precautions.

- Check each component after opening the package to make sure everything is in good condition. If there are any suspected damage, do not use the item and report the issue to your vendor.
- Turn OFF the main power switch and unplug the device from power source when moving the device.
- Do not strike or subject the main unit (and all its components) to physical shock. Use carefully to avoid damage to any part.
 - Never drop or sharply jolt the unit.
 - Contains delicate parts that may break if the unit is dropped.
- Make sure the equipment is always grounded. Always connect power to a grounded receptacle.
- Temperature may reach as high as 480°C when switched ON.
 - Do not use the device near flammable gases, paper and other flammable materials.
 - Do not touch heated parts, which can cause severe burns.
 - Do not touch metallic parts near the tip.
- Disconnect the plug from the power source if the unit will not be used for a long period.
 - Turn off power during breaks, if possible.
- Soldering process produces smoke, use on well ventilated places.
- Do not alter the unit, specifically the internal circuitry, in any manner. **HIGH VOLTAGE** present inside the unit. **DO NOT** attempt to service equipment.

SAFETY PRECAUTIONS

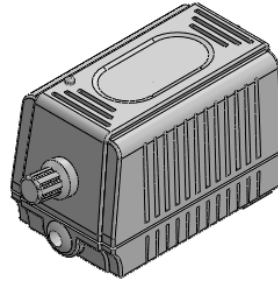


CAUTION: Improper usage can cause serious injury to personnel and/or damage to equipment and work area. For your own safety, please observe the following precautions.

- Check each component after opening the package to make sure everything is in good condition. If there are any suspected damage, do not use the item and report the issue to your vendor.
- Turn OFF the main power switch and unplug the device from power source when moving the device.
- Do not strike or subject the main unit (and all its components) to physical shock. Use carefully to avoid damage to any part.
 - Never drop or sharply jolt the unit.
 - Contains delicate parts that may break if the unit is dropped.
- Make sure the equipment is always grounded. Always connect power to a grounded receptacle.
- Temperature may reach as high as 480°C when switched ON.
 - Do not use the device near flammable gases, paper and other flammable materials.
 - Do not touch heated parts, which can cause severe burns.
 - Do not touch metallic parts near the tip.
- Disconnect the plug from the power source if the unit will not be used for a long period.
 - Turn off power during breaks, if possible.
- Soldering process produces smoke, use on well ventilated places.
- Do not alter the unit, specifically the internal circuitry, in any manner. **HIGH VOLTAGE** present inside the unit. **DO NOT** attempt to service equipment.

PACKAGE CONTENT

469 Soldering System



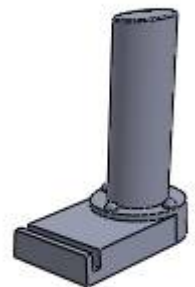
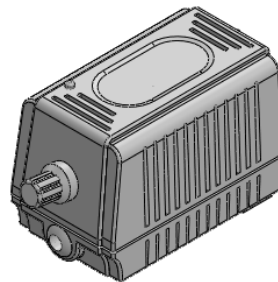
Solder Spool Stand



Solder Iron Holder

PACKAGE CONTENT

469 Soldering System

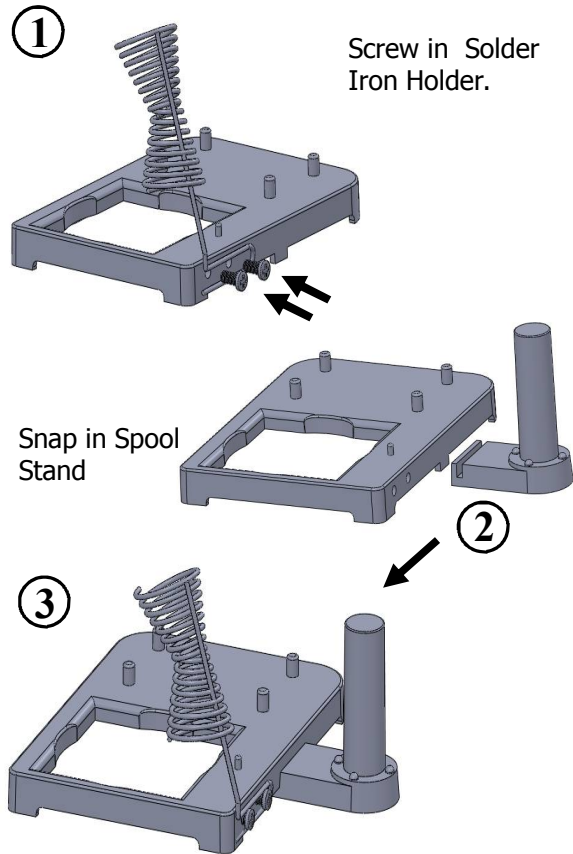


Solder Spool Stand



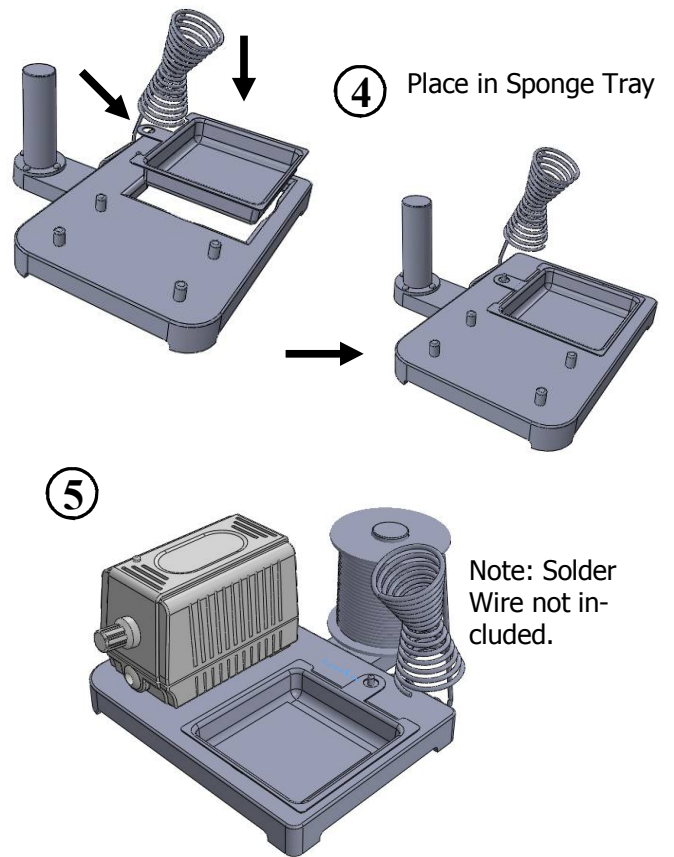
Solder Iron Holder

PRODUCT ASSEMBLY



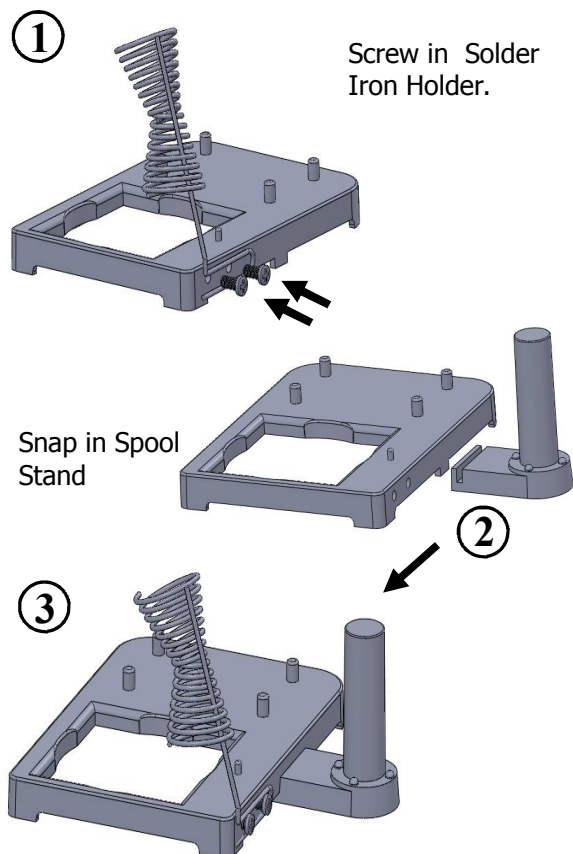
6

PRODUCT ASSEMBLY



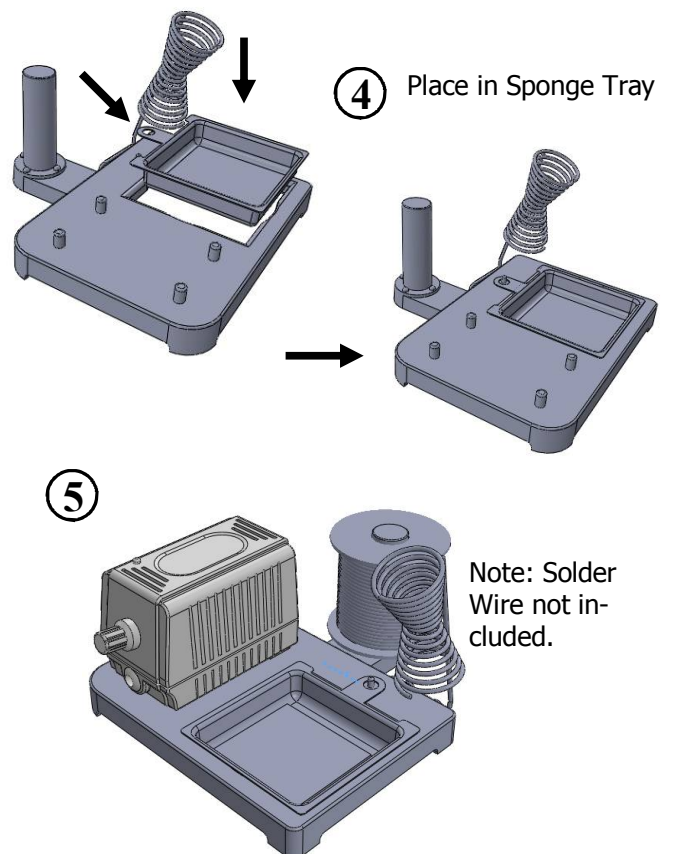
7

PRODUCT ASSEMBLY



6

PRODUCT ASSEMBLY



7